



Volunteer Lake Assessment Program Individual Lake Reports

WAUKEWAN, LAKE, NEW HAMPTON, NH

MORPHOMETRIC DATA

Watershed Area (Ac.):	7,551	Max. Depth (m):	21.4	Flushing Rate (yr ¹)	0.6
Surface Area (Ac.):	913	Mean Depth (m):	6.7	P Retention Coef:	0.7
Shore Length (m):	13,000	Volume (m ³):	24,809,000	Elevation (ft):	539

TROPHIC CLASSIFICATION

Year	Trophic class
1982	OLIGOTROPHIC
1994	OLIGOTROPHIC

KNOWN EXOTIC SPECIES

Variable Milfoil

The Waterbody Report Card tables are generated from the DRAFT 2018 305(b) report on the status of N.H. waters, and are based on data collected from 2008-2017. Detailed waterbody assessment and report card information can be found at www.des.nh.gov/organization/divisions/water/wmb/swqa/index.htm

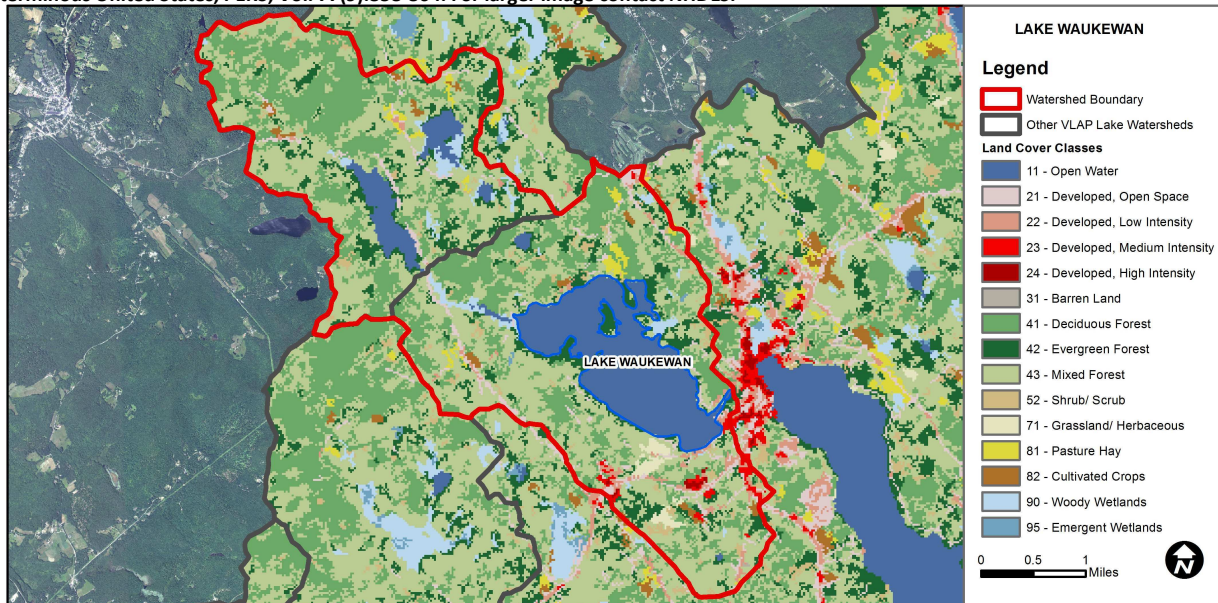
Designated Use	Parameter	Category	Comments
Aquatic Life	Phosphorus (Total)	Good	Sampling data is better than the water quality standards or thresholds for this parameter.
	pH	Slightly Bad	Data periodically exceed water quality standards or thresholds for this parameter by a small margin.
	Oxygen, Dissolved	Bad	Data periodically exceed water quality standards or thresholds for this parameter by a large margin.
	Dissolved oxygen satura	Cautionary	Limited data for this parameter predicts exceedance of water quality standards or thresholds; however more data are necessary to fully assess the parameter.
	Chlorophyll-a	Good	Sampling data is better than the water quality standards or thresholds for this parameter.
Primary Contact Recreation	Escherichia coli	Encouraging	Limited data for this parameter predicts water quality standards or thresholds are being met; however more data are necessary to fully assess the parameter.
	Cyanobacteria hepatoto	Slightly Bad	Cyanobacteria bloom(s).
	Chlorophyll-a	Very Good	All sampling data meet water quality standards or thresholds for this parameter.

BEACH PRIMARY CONTACT ASSESSMENT STATUS

LAKE WAUKEWAN - TOWN BEACH	Escherichia coli	Good	Sampling data commonly meet water quality standards or thresholds for this parameter.
----------------------------	------------------	------	---

WATERSHED LAND USE SUMMARY

Fry, J., Xian, G., Jin, S., Dewitz, J., Homer, C., Yang, L., Barnes, C., Herold, N., and Wickham, J., 2011. Completion of the 2006 National Land Cover Database for the Conterminous United States, PERS, Vol. 77(9):858-864. For larger image contact NHDES.



Land Cover Category	% Cover	Land Cover Category	% Cover	Land Cover Category	% Cover
Open Water	14.6	Barren Land	0.02	Grassland/Herbaceous	0.79
Developed-Open Space	3	Deciduous Forest	25.15	Pasture Hay	1.08
Developed-Low Intensity	1.29	Evergreen Forest	9.6	Cultivated Crops	0.74
Developed-Medium Intensity	0.56	Mixed Forest	39.35	Woody Wetlands	1.81
Developed-High Intensity	0.14	Shrub-Scrub	1.83	Emergent Wetlands	0.05